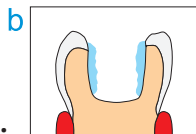


1.

INSTRUCTIONS FOR USE

1. Carefully prepare the cavity. The composite only adheres to the normal structure of enamel and dentine (b); it will not stick to caries (a). Careful polishing of the entire cavity wall will help retain the restoration; it will also prevent microchipping (c) of the restoration margin that may occur as a result of chewing food.

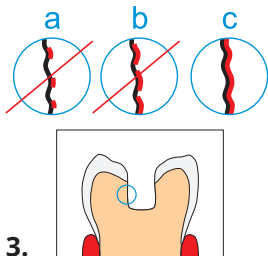


2.

2. Etch the entire surface for 30-60 s (a) using ETCHGEL. It is acceptable to exclude the bottom of the cavity (b) - the composite does not adhere to demineralised tissue. Rinse and dry gently.

POLYMERISATION TABLE

Lamp	Curing time (5 mm sections)
Halogen/LED (500-800 mW/cm ²)	15 s
LED (>800 mW/cm ²)	10 s



3.

3. Thoroughly cover the cavity with BOND, rubbing it in carefully for a few seconds. Make sure the whole surface of the cavity is covered with BOND as this will ensure a total adhesion of composite to the tooth:

a, b - insufficiently c - correctly

Blow off the excess material and cure in accordance with the polymerisation table provided.

MD Medical device class IIa

INDICATIONS FOR USE

BOND is a light cured dental adhesive system used to: bond the hard tissues of the tooth and composite; improve the marginal seal between the restoration and the tooth; reduce polymerisation shrinkage; prepare the surfaces of restorations prior to their cementation using dual cure resin cements.

COMPOSITION

Mixture of dimethacrylate resins (BisGMA, HEMA, BisEMA) combined with ethyl alcohol, catalysts, inhibitors, photoinitiator (CQ : DMAEMA). BOND undergoes free radical polymerisation activated by visible light from the blue region (400-500 nm).

CONTRAINDICATIONS

Do not use BOND in patients with a known allergy to any of the components.

ADVERSE REACTIONS

None known. However, an allergic reaction cannot be excluded in particularly sensitive individuals. In case of an immediate allergic reaction, stop using the product. In case of a delayed allergic reaction, remove the restoration. In case of hypersensitivity, it is recommended to use glass ionomer or calcium hydroxide liners.

LIMITATIONS IN USAGE, INTERACTIONS

Do not use if it is impossible to completely isolate the area from saliva, blood or moisture. Contamination may disrupt the polymerisation process, affecting the mechanical properties of the material and decreasing the durability of the restoration.

Do not use with materials containing phenolic compounds, especially eugenol and thymol. Such materials may disrupt polymerisation of BOND.

PRECAUTIONS

Avoid contact of unpolymerised product with skin, eyes and the soft tissues of the mouth. In case of such contact, rinse with plenty of water. In case of any symptoms, consult a doctor giving information about the product. To minimise the risk of contact, always wear personal protective equipment such as gloves, face masks and safety glasses.

In case of swallowing or aspiration into the respiratory tract, seek immediate medical attention.

To isolate the operative field and to protect the patient, the use of a rubber dam is recommended.

Ensure sufficient polymerisation. Insufficiently polymerised product can be allergenic.

In case of any contamination or mechanical damage to the restoration, gently polish its surface and cover it with BOND before the application of another composite layer. In case of contamination of the cavity that has already been covered with BOND, etch its surface and reapply BOND.

In case of insufficient polymerisation, remove the incorrectly polymerised layer and apply another one, curing it correctly.

Avoid contamination of the dropper and the bottle surface (the risk of cross infection).

To avoid accidental polymerisation of BOND, recap the bottle immediately after use.

WARNINGS



Keep out of reach of children and unauthorised persons. Protect from light. Polymerisation of the adhesive system may be initiated by ambient light or by a dental operating lamp. Protect from heat. Do not freeze. Keep BOND away from naked flames. Use in accordance with the manufacturer's instructions. Do not use after the expiry date.

STORAGE

Store at a temperature under 25°C. Do not expose to direct sunlight.

For use by dentists and dental technicians only.

WARRANTY

ARKONA will replace products that have been proved to be defective or will refund the price of purchase. ARKONA is not liable for any loss or damage caused by misuse or improper use of the product.

Instruction for use issued on 24.02.2020